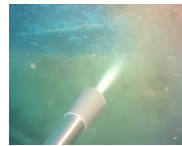


## Gasoline High Pressure Unit

16 LPM @ 210 bar

The gasoline engine driven HDMP210\_16 high pressure unit is designed for cavitation cleaning of medium fouling. The solid, stand-alone, cart has 4 wheels for easy transportation and 16 LPM @ 210 bar pump, Honda gasoline engine and gas tank. The HDMP210\_16 is compatible with the CW300 long gun for removing medium fouling.



## Specifications

**Compatible with:** CW300

**Max. Pressure:** 210 bar (3,045 psi)

**Max. flow:** 16 LPM (4.2 GPM)

**Power:** 11HP Honda gasoline engine

**Weight:** 87kg (192 lbs)

**Dimensions:** 62x116x71cm  
(24.4x45.7x28")

## Features

- Removes light fouling from hulls, propellers and underwater surfaces
- Heavy duty, 4 wheeled cart
- Manual pressure valve
- Readily serviceable water filter
- Automatic decelerator to reduce RPM in the bypass phase
- No engine-oil safety device
- Motor thermal protection